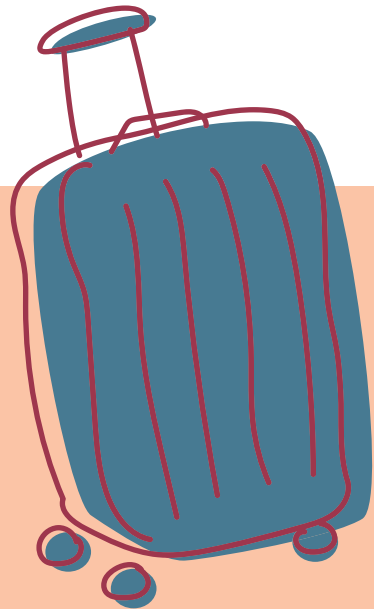
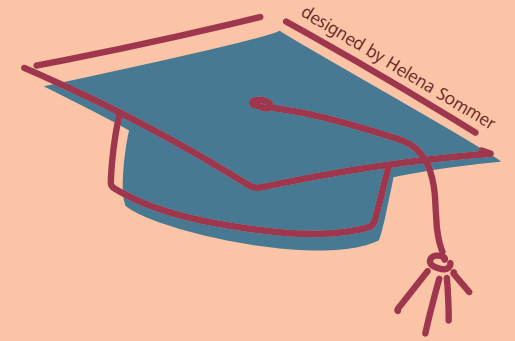


# GUIDE



## for Incomings



Faculty of Law

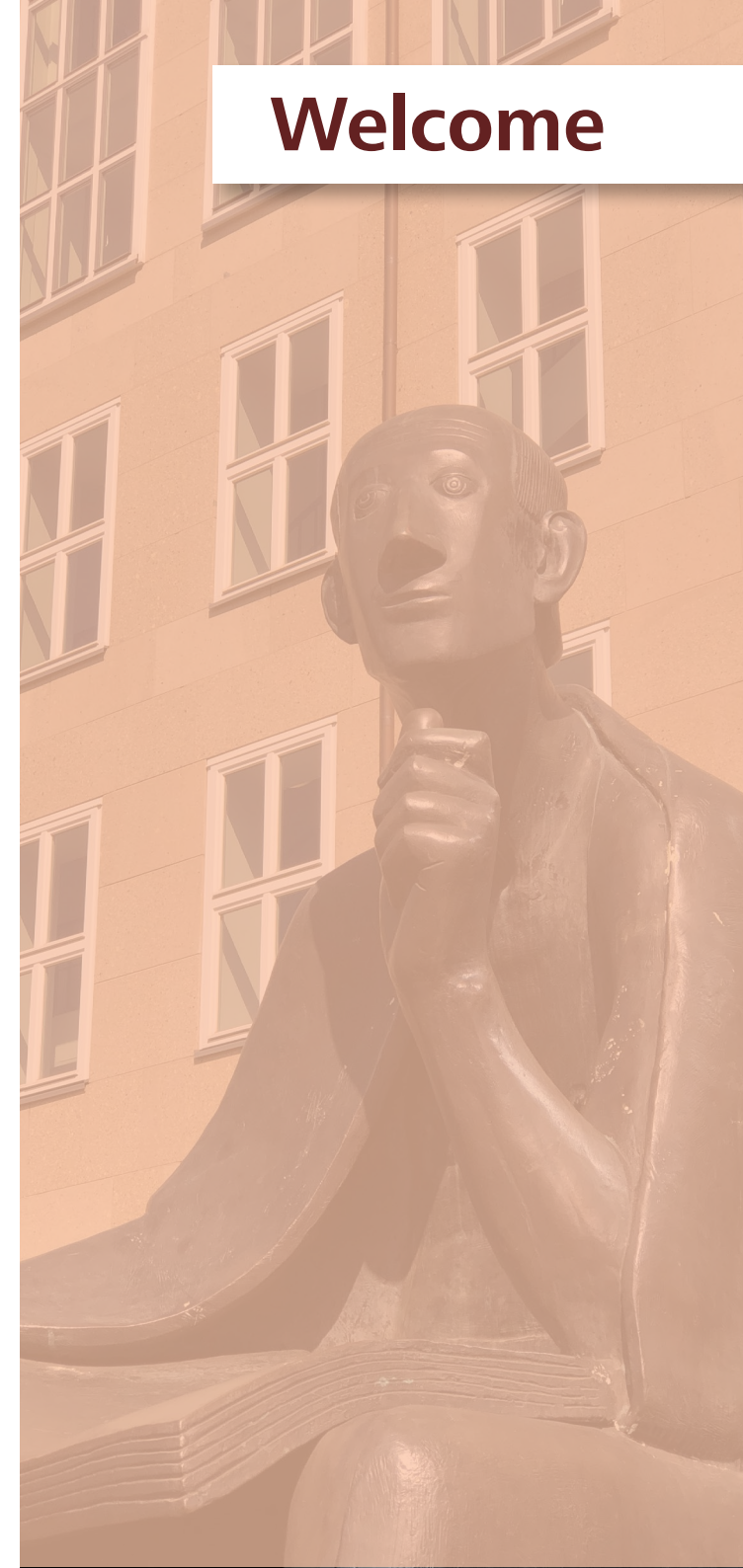


# Welcome

## Dear incoming students,

Prof. Dr. Dr. h.c. Mansel as faculty representative of the Centre for International Relations of the Faculty of Law and the Erasmus+ programmes, the team of the Centre for International Relations as well as the other international programme coordinators, Prof. Dr. Dr. h.c. Dauner-Lieb, Prof. Dr. Haferkamp, Prof. Dr. Dres. h.c. Hobe, Prof. Dr. Junker, Prof. Dr. Kempen, Prof. Dr. Dres. h.c. Kreß LL.M., Prof. Dr. Dres. h.c. Nußberger M.A., Prof. Dr. von Coelln and Prof. Dr. Weißer, as representatives of the Faculty of Law, are happy **to welcome you in Cologne!**

This guide aims **to assist** you both at the beginning of your stay in Cologne and **to provide** you with tips for your stay. Hopefully, you will enjoy your time at our faculty and in the city of Cologne.



# Welcome

## 1. Before you go

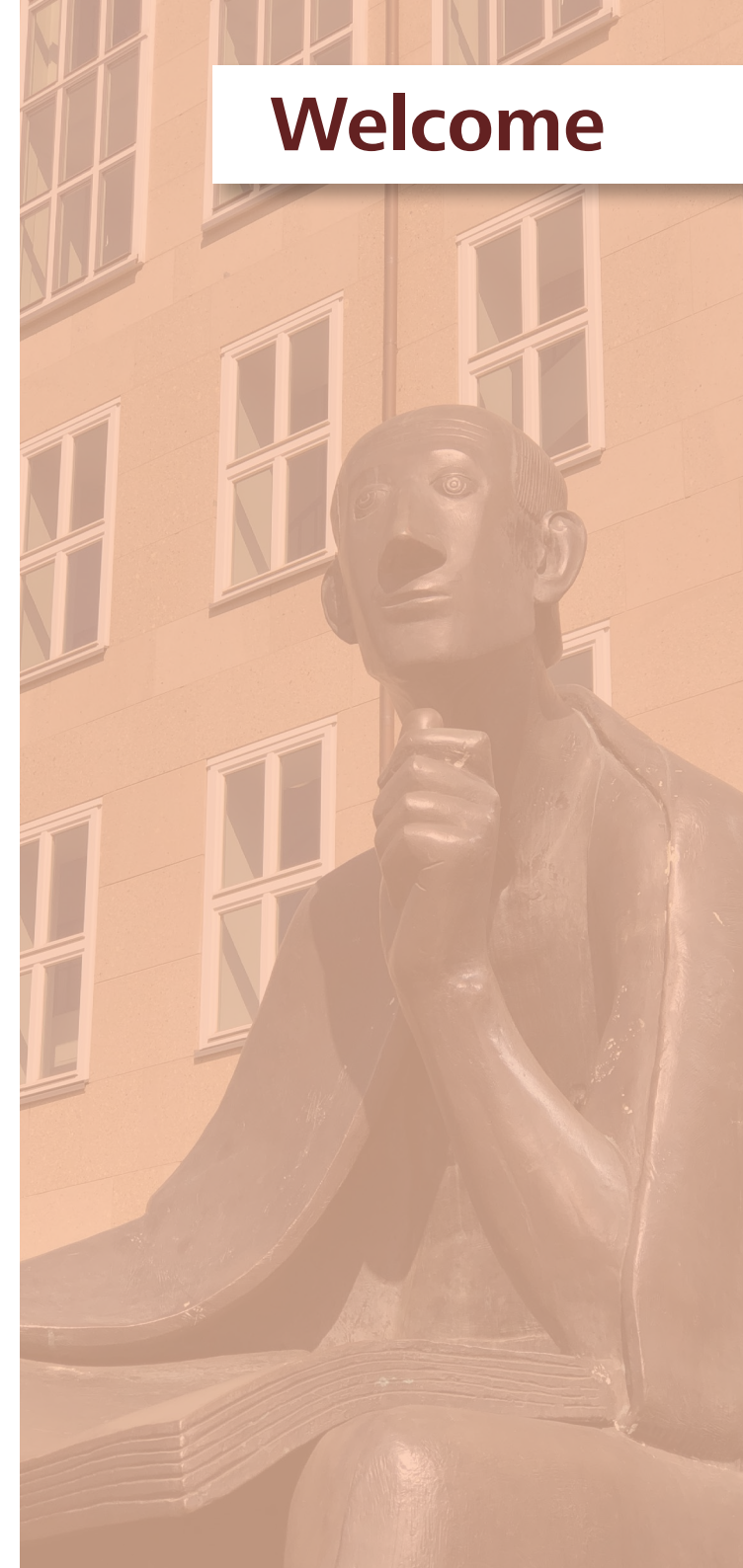
- Money
- Mobile phone companies

## 2. Plan your trip

- Travelling to Cologne
- Where to live

## 3. While you are here

- How to move around
- ZIB Jura
- Extracurricular activities at the University of Cologne
- Public holidays and Sundays
- Information on pharmacies and health services
- Tips on Cafés, Restaurants and activities
- Cultural Offerings, Sights and Sports Events
- Festivities



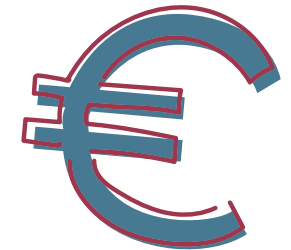
# Before you go

## Money

Costs of a German Student per month:

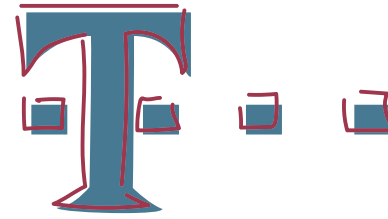
cost item	costs
rent	300 – 600 €
food	146 – 233 €
travelling	84 – 134 €
clothes	34 – 63 €
phone, internet, etc.	25 – 39 €
learning aid	19 – 27 €
health insurance	0 – 200 €
(cultural) activities, sports	47 – 89 €
fees	13 – 176 €
total costs	at least 642 – 1.547 €

<https://www.studis-online.de/studienkosten/>



The actual individual costs of international students can vary greatly depending on the cost of the different countries' health insurances or how much the individual student spends on leisure activities or clothing. These are only approximate guidelines as to how high the costs can be. The travel costs usually only amount to the cost of the semester ticket, which is valid for the entire semester. The cost of this semester ticket (212,75€) is included in the semester fee (292,75€) which is due at the beginning of each new semester.

# Before you go



## Mobile phone companies

As an international student, it makes sense to get a German sim card.

Tip: Always ask for a special offer for students!

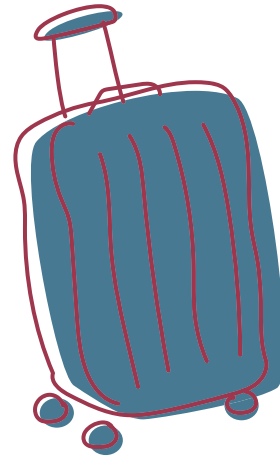
Many phone companies have such offers which can make it significantly cheaper for you.

Some phone companies offer the possibility of having a prepaid sim card without contractual obligation. This can be a good option for you if you only stay in Germany for a few months.

Popular phone companies in Germany are

- Congstar
- o2
- Aldi Talk, Lidl Connect or other supermarkets' offerings
- Vodafone
- Blau
- T-Mobile





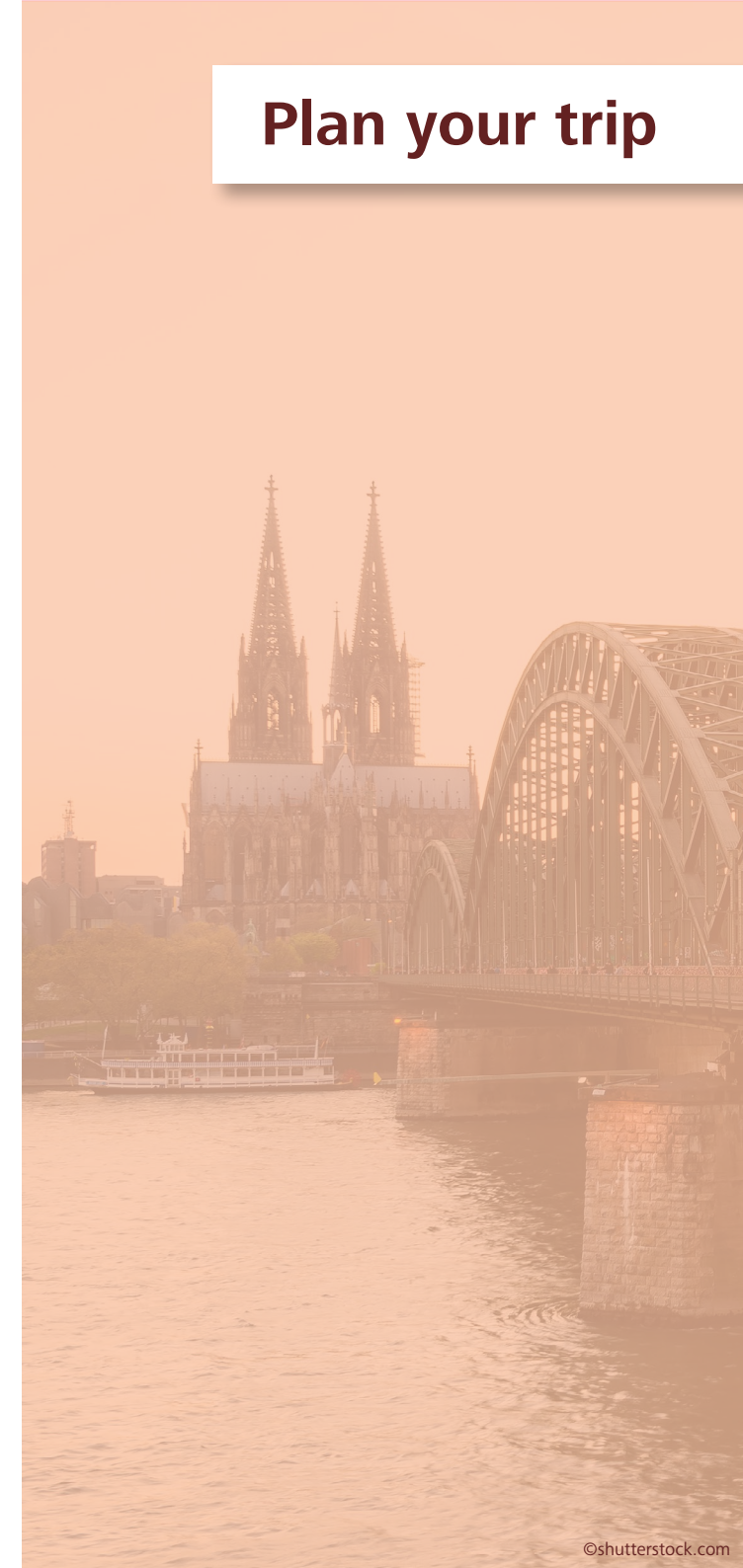
## Travelling to Cologne

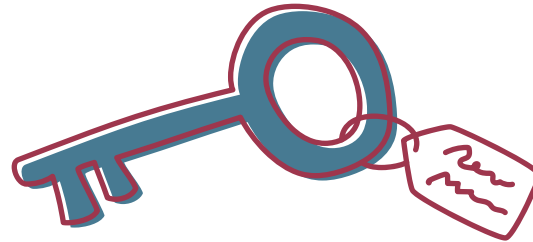
### By airplane

- Cologne Bonn Airport (CGN), Kennedystraße, 51147 Cologne  
From here, you can take the S19 (direction: Düren) or the RB 27 (direction: Mönchengladbach) to get to Cologne's Main Station in the City Center, next to the Kölner Dom.
- Düsseldorf Airport (DUS), Flughafenstr. 105, 40474 Düsseldorf (48 km)  
From here, you can take the RE 1 (direction: Aachen Hbf), RE 5 (direction: Koblenz Hbf) or the RE 6 (direction: Köln Hbf) to get to Cologne's Main Station in the City Centre, next to the Kölner Dom.
- Frankfurt Airport (FRA), 60547 Frankfurt am Main (151 km)  
From here, you have to take the train (IC, ICE/RE) to get to Cologne (Köln Hbf or Köln Messe/Deutz). The ticket prices vary between 22,90€ and 80,70€ depending on the type of ticket you prefer (Sparpreis, Flexpreis etc.)  
Find more here: [Deutsche Bahn: bahn.de - Verbindungen - Verfügbarkeit](https://www.bahn.de)

### By train

- Köln Hbf / Cologne Main Station, Trankgasse 11, 50667 Köln
  - Köln Messe/Deutz / Cologne Trade Fair/Deutz, Messeplatz 1, 50679 Köln
- From here, it takes you just a few minutes to Köln Hbf with the S6, S11, S12 or S19





## Where to live in Cologne

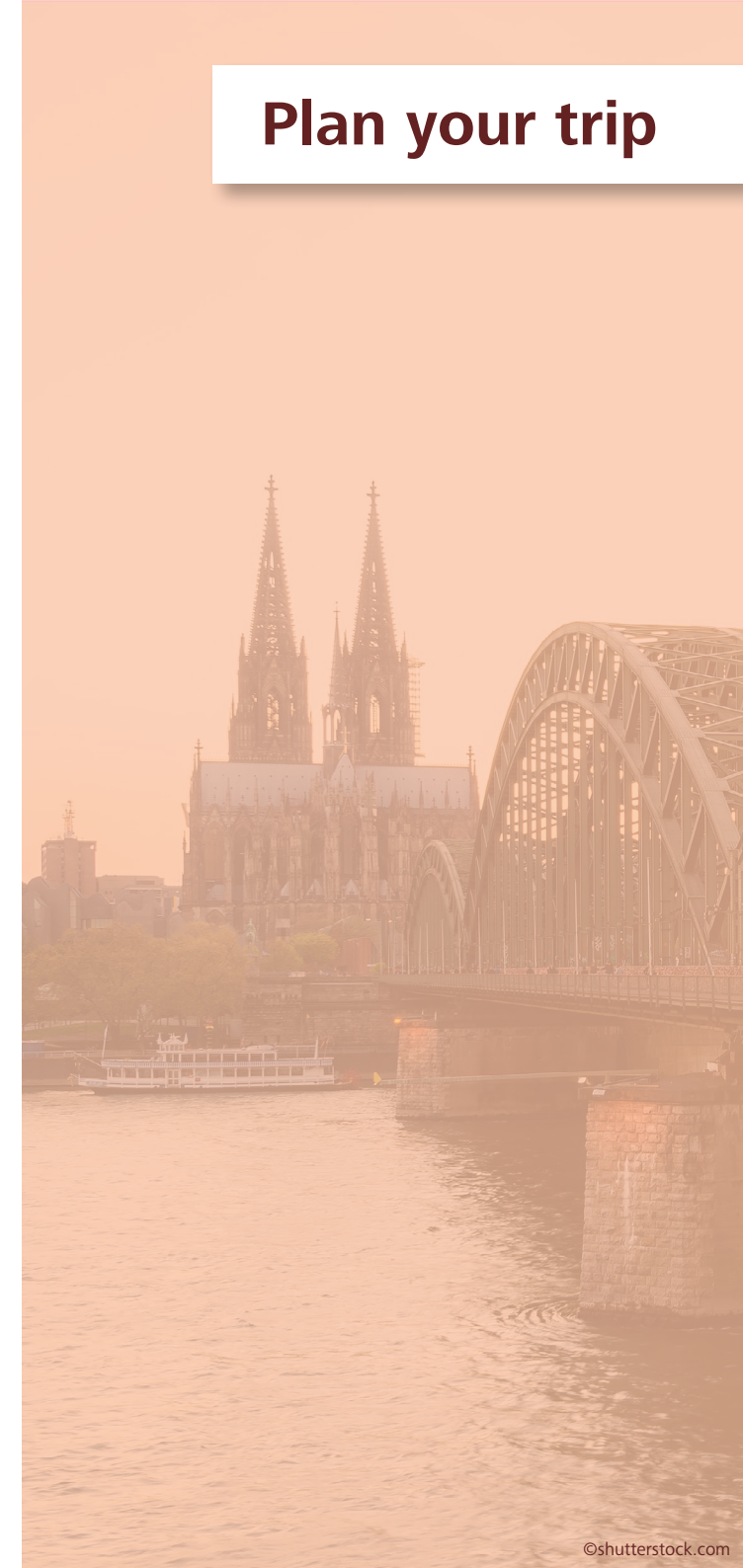
It is good to know, that you should start „flat-huntig“ early. At the beginning of the semestre, the demand is really high, so start looking for an apartment already in your home country.

**Dormitories – Kölner Studierendenwerk:** It is recommended to apply for a place in student housing as early as possible. Unfortunately, an acceptance for international students cannot be guaranteed. The application deadline is 15 July/15 January. Find more information here:

<https://www.kstw.de/wohnen>

**Private Apartments/Rooms:** The platform „WG-Gesucht“ offers a comprehensive search for temporary and unlimited rooms in shared flats, as well as complete flats. It should be noted that, especially in the case of temporary accommodation, rooms are sometimes only posted a few weeks before the move-out date. Find more information here:

<https://www.wg-gesucht.de/wg-zimmer-in-Koeln.73.0.1.0.html>



# While you are here

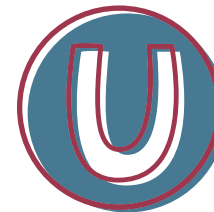
## How to move around in Cologne

As a student of the University of Cologne, you will receive a “**UCCard**”, your student card which contains a ticket for public transportation in the whole state of Nordrhein-Westfalen.

The UCCard’s validity starts with the beginning of the semestre (1 April/1 October) and ends on 30 September/31 March. Before the start of the semester, you need to buy tickets for public transportation.

With a valid UCCard, you can use the following means of transportation:

- Busses
- Trams/Subways
- Public trains: S-Bahn, RE, RB (not ICE, IC, EC)
- Nextbike: the first 30 minutes of renting a nextbike/KVB-bike in Cologne are free of charge





# While you are here

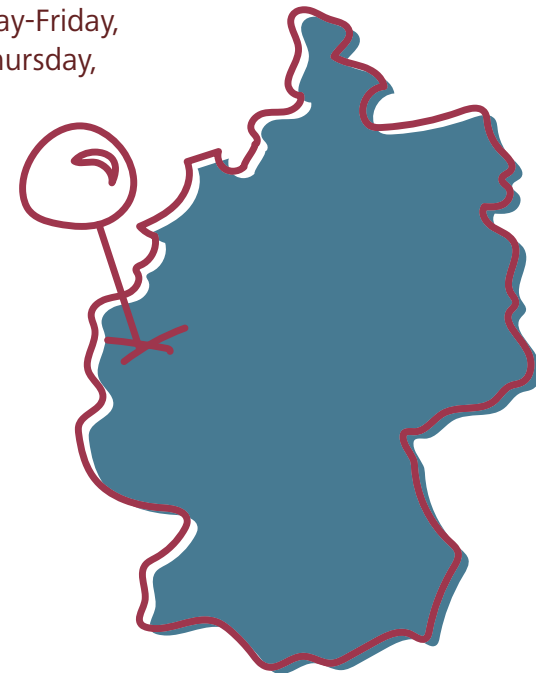
## ZIB Jura

The **Centre for International Relations of the Faculty of Law** (ZIB Jura) coordinates the Faculty of Law's international activities:

- Support for students in international exchange programmes.
- Service institution and coordination of all international study and exchange programmes of the Faculty of Law.
- Matters of admission, exams, advise and support of outgoing students as well as incoming students from partner universities.

The [ZIB Jura](#) is your first contact in case you have questions. You can find us in the University's main building (Albertus-Magnus-Platz, 50923 Köln), wing V, ground floor, room 5.005 and reach us at [zib-jura@uni-koeln.de](mailto:zib-jura@uni-koeln.de) or [exchange-law@uni-koeln.de](mailto:exchange-law@uni-koeln.de) or +49 221 470 6367.

Our regular opening hours are Monday-Friday, 9:30 a.m.-12:30 p.m. and Monday-Thursday, 2:00-4:00 p.m.



**While you are here**



## **Extracurricular activities at the University of Cologne**

**UniSport Köln** (Gym offer of the University of Cologne)

### **Clubs**

- [ELSA Köln](#) (The European Law Students' Association)
- [Refugee Law Clinic Cologne](#)
- [Women Entrepreneurs Law Clinic](#)
- [Legal Tech Lab Cologne](#)
- [Corporate Law Clinic Köln](#)
- [Erasmus Student Network Köln](#)
- [AEGEE](#)
- More student clubs can be found [here](#)



# While you are here

## Public holidays and Sundays

There are the following **public holidays** in Nordrhein-Westfalen:

- January 1st: New Year's Day
- Good Friday
- Easter Monday
- May 1st: Labour Day
- Ascension Day
- Whit Monday
- Corpus Christi
- October 3rd: Day of German Unity
- November 1st: All Saints' Day
- December 25th: Christmas Day
- December 26th: 2nd Day of Christmas

The university's **holidays** are the following:

- 2 weeks of Christmas holidays, starting around December 23rd
- 1 week of Whitsun holidays, starting on Whit Monday

Please be aware that in Germany shops are closed on Sundays and public holidays. But there are a lot of kiosks (small shops) in Cologne that are open on Sundays and public holidays and they often offer a small range of food products.



# While you are here

## Information on pharmacies and health services

There is a large number of pharmacies across the whole city of Cologne. The “Apothekerkammer Nordrhein” offers a [search tool](#) to find a pharmacy near your current location. There is also a [search tool](#) for pharmacy emergency services outside the opening hours.

The city of Cologne offers search tools to find [hospitals](#) as well as [doctors](#).

Your international health insurance (e.g. EHIC/GHIC/AT 11) allows you to get state-provided medically necessary treatments, often at a reduced cost and sometimes even for free. Please make sure to have your insurance with you during your stay. Please note that neither EHIC nor GHIC can be used as an alternative to travel insurance. We therefore recommend you to additionally take out a private travel insurance for your stay abroad. Exchange students from Turkey who have a so-called AT-11 do not need to take out health insurance in Germany due to a social insurance agreement between Germany and Turkey.

# While you are here

## Tips on Cafés, Restaurants and activities

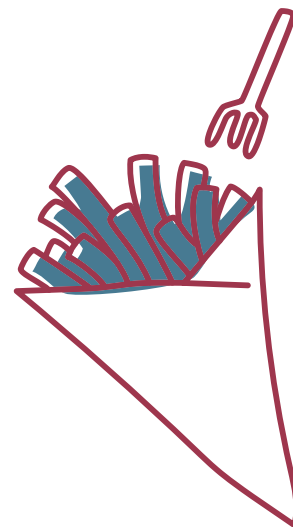
Areas that are **very popular** among students and provide a lot of cafés and restaurants are “Agnesviertel”, “Belgisches Viertel”, “Ehrenfeld”, “Kwartier Latäng”, “Südstadt” and “Sülz”.

There are **different blogs** that provide you with tips on cafés, restaurants and activities in and around Cologne.

Three popular ones are:

- MitVergnügen Köln: <https://koeln.mitvergnuegen.com/>
- Rausgegangen Köln: <https://rausgegangen.de/>
- Geheimtipp Köln: <https://geheimtipp-koeln.de/>

The city of Cologne also offers an overview of leisure, nature and sports facilities: <https://www.stadt-koeln.de/leben-in-koeln/freizeit-natur-sport/>



# While you are here

## Cultural Offerings, Sights and Sports Events

- Kölner Dom (you can visit the cathedral and even go all the steps up to the top of the cathedral)
- Rautenstrauch-Joest Museum (ethnological museum)
- Römisch-Germanisches Museum (archaeological Museum)
- Wallraf-Richartz-Museum (art museum and gallery)
- Museum Ludwig (art museum)
- Kolumba Museum (art museum)
- Museum für Ostasiatische Kunst (museum for eastern asian arts)
- Museum für angewandte Kunst - MAKK (museum for applied arts)
- „Musical Dome“ in Cologne
- Chocolate Museum Cologne
- Choi&Lager Gallery
- Galerie Boisserée
- Molkerei Werkstatt
- Kölner Zoo
- Hohenzollernbrücke
- Poller Wiesen (perfect if you want to go for a walk along the Rhine)
- Skatepark Kap686
- Fleamarket Südstadion
- City Park and animal Park in Lindenthal
- Decksteiner Weiher (pond/lake outside Cologne City centre, easy to reach with the tramway 7 direction Frechen/Benzelrath, you have to leave the tramway at the station „Stüttgenhof“, perfect for a walk or picnic and you can even rent a pedal boat in spring/summer)
- Aachener Weiher (pond in the city, very popular during summer with lots of music, people picnicing and doing sports)
- Cologne cable car (to get an overview over the whole city)
- 1. FC Köln (football team that is part of the German “Erste Bundesliga”)
- Kölner Haie (ice hockey team that is part of the German ICE Hockey Ligue)

# While you are here

## Festivities

- Kölner Karneval
- Summer Jam Festival
- Parookaville (Festival)
- Juicy Beats (Festival)
- Pollerwiesen Köln
- Gamescom Cologne
- Rhein in Flammen Bonn (Festival)
- KUNST!RASEN Bonn (Festival)

